

TECHNICAL SPECIFICATION

HOT AIR DRYER (HAD Series)

Bulletin : BAA:HAD-905.6
Effective : JAN. 10, 2017
Supersedes : BAA:HAD-905.5
Dated : SEP. 28, 2016

All HAD Series dryer comes standard with:

- Aluminium casting cone and cylinder in SS for long life & avoid corrosion
- Stainless steel tubular heaters for long life
- Micro PLC temperature controller
- Digital display of actual temperature against set temp
- Directly machine mounted / stand mounted
- Insulated heating cylinders
- Sight glass for checking material level
- Swivelable cylinder for models upto HAD 300 for easy cleaning
- Cool down mode avoids material lump formation while shut down
- Discharge outlet for easy cleaning of material during material change
- High pressure blower for sufficient air flow
- Special SS shade separator for uniform air distribution
- Cyclone separator for clean and dust free environment
- Safety cut off on RTD failure
- Loader mounting arrangement for automatic loading*
- Adjustable damper for air control***
- Clean out window***
- Blower over load protection for 3 phase model
- Slide gate for open / close the material
- Safety cut off on Temperature Low/Over Shoot
- Drying temperature 120 °C max. as standard
- World wide proved Siemens make electrical switchgears for safety & reliability



* Optional in HAD-13 & HAD-25

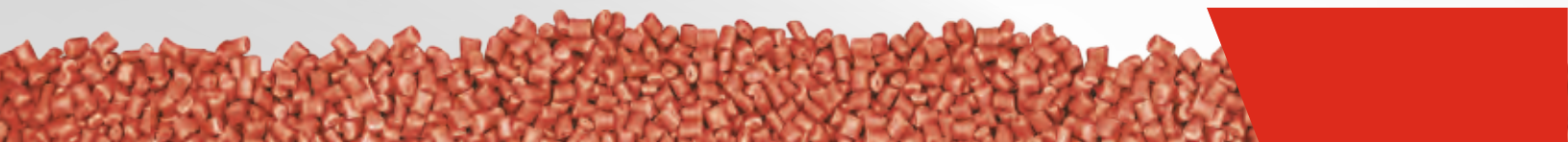
*** Available in HAD-400 and above only

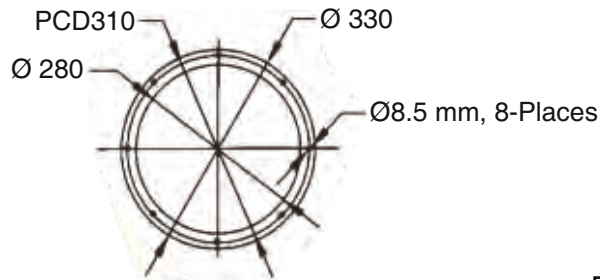
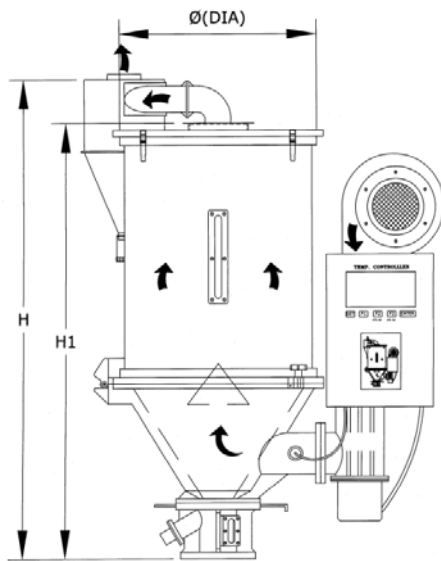
Specifications for HAD Series Dryer

MODEL	VOLUME IN LITERS	TOTAL LOAD KW AT 415/3/50	HEATER CAPACITY (KW) 120°C	BLOWER CAPACITY (KW)	DIMENSION IN MM.			MOUNTING DETAIL IN MM					Extra Heater Capacity (KW) 180°C	APPROXIMATELY SHIPPING WEIGHT IN KG
					H	H 1	DIA	A	B	C	D	E		
**HAD-13	25	2.1	2.1	0.08	780	705	273	120	50	80	60	10	2.1	37
**HAD-25	50	2.7	2.7	0.08	990	1000	350	150	52	90	75	10	2.7	55
HAD-50	100	4.0	3.9	0.18	1155	1145	432	160	60	94	80	10	3.9	72
HAD-100	200	6.5	6	0.26	1400	1375	555	222	90	135	111	10	6.0	105
HAD-200	400	11	10	0.26	1690	1570	701	280	106	167	140	10	10.2	140
HAD-300	600	11	10	0.26	2190	2070	701	280	106	167	140	10	10.2	170
HAD-400	800	20.5	20	0.75	2230	2078	852	304	126	180	152	10	19.8	220

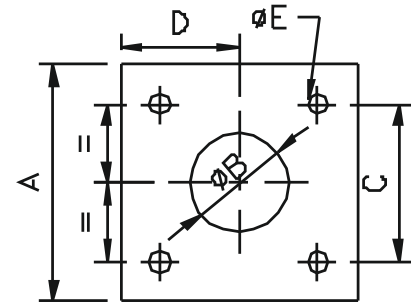
** Blowers in 230/1/50 only

ALL DATA SUBJECT TO CHANGE WITHOUT NOTICE





Receiver Mounting Detail



Base Flange Mounting Detail HAD

Option Availability

DESCRIPTION	AVAILABILITY						
	HAD-13	HAD-25	HAD-50	HAD-100	HAD-200	HAD-300	HAD-400
PROGRAMMABLE TIMER (WEEKLY)	AVAILABLE	AVAILABLE	AVAILABLE	AVAILABLE	AVAILABLE	AVAILABLE	AVAILABLE
PROGRAMMABLE TIMER DAILY	AVAILABLE	AVAILABLE	AVAILABLE	AVAILABLE	AVAILABLE	AVAILABLE	AVAILABLE
HIGH HEAT	← CONSULT FACTORY →						
INSULATED SHELL	← AVAILABLE →						
STAND	← CONSULT FACTORY →						
BUTTERFLY VALVE	← AVAILABLE →						
PNEUMATIC OPERATED BUTTERFLY VALVE	← AVAILABLE →						
PADDLE SWITCH	← AVAILABLE →						
VACUUM TAKE OFF BOX	← AVAILABLE →						
PNEUMATIC VACUUM TAKE OFF BOX	← AVAILABLE →						

ALL DATA SUBJECT TO CHANGE WITHOUT NOTICE

Resin Drying Schedule		
MATERIAL	DRYING TEMP.(C°)	DRYING TIME (HRS.)
PVC	70-72	1
LDPE / HDPE	80-85	1-2
ABS*	80-85	2
PP, PE	80-85	2
NYLON*	80-85	2-3
ACRYLIC*	70-75	2
PS*	80-85	2
POLYCARBONATE*	120-125	3

(*) The material specified hygroscopic material and by heating in hot air dryer to the temperatures mentioned, only surface moisture will be removed. For thorough drying of these material, Bry-Air Honeycomb Wheel Dehumidifying Dryers(BHD) is recommended.

